



SOYBEAN NEBRASKA

FALL 2024

A Publication of the Nebraska Soybean Association and the Nebraska Soybean Board

FARMER-FOCUSED

12-13 | Read our Q&A with Union Pacific to learn about their use of biodiesel and other renewable fuels.

14-27 | Discover how we're building value and programming for farmers in our Farmer Support feature section.

**YOU WERE MADE FOR THIS.
SO WERE WE.**



 **STINE HAS YIELD**



LIVE YOUR LIFE YOUR WAY

SOYBEAN NEBRASKA

The Nebraska Soybean Association (NSA) and the Nebraska Soybean Board (NSB) are proud to share the FY25 Fall edition of this publication with you—members of our shared community.

Here's How It's Been Growing

- 4** | **SUPPORT AND STEWARDSHIP**
Farmer and harvest insights from NSB Executive Director Andy Chvatal and Chairman Jason Penke.
- 5** | **HARVEST TIME**
NSA expands efforts to protect biodiesel and create market opportunities.
- 6** | **NSB WELCOMES ELECTED AND RE-ELECTED MEMBERS**
Meet NSB's newly and re-elected members.
- 8** | **PORK MONTH IN NEBRASKA**
Celebrating Nebraska-raised pork and its connection to Nebraska soybean farmers.
- 10** | **AGP'S DAVID CITY SOYBEAN PLANT SET FOR 2025 COMPLETION**
Soybean processing plant advances, set to handle over 50 million bushels annually.
- 12-13** | **ON TRACK WITH RENEWABLE FUELS**
A Q&A with Union Pacific's Thad Call on their use of biodiesel and other renewable fuels.

14-27 FARMER-FOCUSED

Discover how we're building value and programming for Nebraska farmers through Farmer Support.

- 15** | **YOUR GO-TO AG MARKET TOOLS**
Empowering Nebraska farmers with market insights through the WMR and Grain IQ.
- 16-17** | **BROADCASTING AGRICULTURE'S FUTURE**
How the Rural Radio Network and NSB partner to inform, innovate and inspire the ag industry.
- 19** | **SOYBEAN FARMERS INVEST \$1.3M TO EXPAND SOYBEAN MEAL EXPORTS**
New investment will enhance port capacity and support major upgrades.
- 20-21** | **PREPARE FOR SOYBEAN CYST NEMATODE SAMPLING SEASON**
Take advantage of free SCN testing as the 2024 field season wraps up.
- 22** | **TWO ORGANIZATIONS WORKING FOR YOU**
How NSA and NSB work to support you through membership and the checkoff.
- 24-25** | **LEADING ON-FARM INNOVATIONS**
Meet Adam Leise, the new Nebraska On-Farm Research Network Director.
- 26-27** | **SPOTLIGHT ON SOYBEAN FIRST PURCHASERS**
Appreciating a key contributor to the soybean checkoff process.

- 29** | **FUELING YOUR FARM**
Learn about the biodiesel program that is offering an incentive for farmers.
- 30** | **INDONESIA, AN ENCOURAGING MARKET FOR NEBRASKA SOYBEANS**
The Nebraska delegation explored market opportunities for agricultural exports in Indonesia.
- 31** | **SOY CONNEX 2024 POSITIONS NEBRASKA FARMERS TO INCREASE U.S. SOY EXPORTS**
Global summit supports exports in anticipation of a strong 2024 crop.

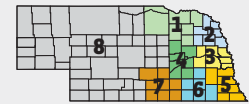


402-441-3240
nebraskasoybeans.org

The Nebraska Soybean Board is a private, nonprofit checkoff board responsible for the research and promotion of soybeans in an effort to increase the profitability of the state's 22,000 soybean producers.

Nebraska Soybean Board Members

- District 1**
Anne Meis (Vice Chair), Elgin
- District 2**
Jason Penke (Chairman), Craig
- District 3**
Jay Hanson, Mead
- District 4**
Eugene Goering, Columbus
- District 5**
Mark Caspers, Auburn
- District 6**
Mike Tomes (Secretary), Utica
- District 7**
Doug Saathoff, Trumbull
- District 8**
Blake Johnson (Treasurer), Holdrege
- At-Large**
Greg Anderson, Newman Grove



United Soybean Board Members

- Greg Greving, Chapman
- Tony Johanson, Oakland
- Ed Lammers, Hartington
- Victor Bohuslavsky, Seward

Nebraska Soybean Board Staff

- Lisa Ablor
- Andy Chvatal
- Thomas Hoxmeier
- Lois Ronhovde
- Sophia Svanda
- Wesley Wach

On The Cover

David Iekel, a farmer near Seward, Nebraska, checks his grain trailer level during soybean harvest.

Note from the
**EXECUTIVE
DIRECTOR**



By Andy Chvatal

The calendar flipping over to the fall season brings excitement. It's a yearly indication that a career in agriculture is an absolute gift from God and only so many are chosen to do it. Thousands of individual decisions turn into quantifiable results and hope transitions to reality.

We talk a lot about support in agriculture. Do you have the right people in your corner to help you achieve your goals? Is the speed of change in agriculture outpacing you? Are you the one offering support to others who may need your expertise and advice?

I'm very blessed to have a lot of great people in my corner. It helps guide my decision-making on our family farm, and it helps guide our decision-making at the Nebraska Soybean Board (NSB) as we move into a new fiscal year. Farmer Support has been a staple pillar of NSB's strategic plan. Return on investment (ROI) usually comes in the direct form of dollars and cents in most checkoff investments, but ROI can also be measured by how well we inform you and others who support your soybean-growing efforts.

The agricultural sector in Nebraska is such a dynamic group of individuals, commodity boards, cooperatives, extension and industry. Creating alignment and support for these efforts is a key part of ensuring your checkoff investments continue to bring a positive ROI to your farm. Please, continue to stay active and lend a hand to those who may need it. Reach out to our office or your district director if you have an idea or an interest in learning more about your checkoff's investments.

I wish you all a very safe and bountiful harvest.

Checking In With The Chairman

**SUPPORT AND
STEWARDSHIP**



By Jason Penke, NSB Chairman, Craig

If you read my last column, you learned about a sign in our shop that said, "It's not the harvest you reap, but the seeds you plant." Well, now it's time to buckle your seatbelts, ladies and gentlemen, because harvest is upon us. Harvest time means so much to all of us. Whether it's your first harvest or your 51st, it's a special time. It reminds me of another sign in our shop that says, "On the 8th day, God looked down and said, 'I need a caretaker,' so God made a farmer."

This quote rings true for all of us as producers. We were created for this lifestyle—to be stewards of the land and work until the job is done, no matter how long it takes. One of the four main initiatives at the Nebraska Soybean Board (NSB) is Farmer Support. This area was created to help assist the "caretaker" in all of us.

I'll be the first to admit, I don't like to ask for help. But as I've gotten, let's say... wiser, I've learned the value of leaning on others for support. Connecting with people who can help you be more successful is the purpose of our Farmer Support investments. Whether it's your grain elevator, cooperative, chemical supplier, seed dealer, crop advisor, extension agent or agricultural organization, connecting with people in these areas as needed will help your operation become more profitable. If you need help finding the right person to answer your questions, feel free to call anyone with NSB, and we'd be glad to assist.

As we start our new fiscal year at NSB, I want to thank Ruth Ready for her knowledge, support and guidance as a district director these past three years. I'd also like to welcome Jay Hanson from Mead to the board.

In closing, I want to wish each and every one of you a safe and bountiful harvest. God bless, and GO BIG RED!

Soy Action Center HARVEST TIME

By Kent Grotelueschen, NSA President, Octavia



This time of the year we put in long days, and our focus is on getting the crops out of the field.

Part of our duty as grassroots membership organizations such as the Nebraska Soybean Association (NSA) and American Soybean Association (ASA), is to convey how much farmers rely on certainty to sustain their business. Growing the biodiesel industry has been one of our top priorities and that gives us some certainty.

Recently, NSA joined the soybean industry's efforts to submit comments on changes to the California Air Resources Board's (CARB) proposed modifications to the Low Carbon Fuel Standard, a proposal that would not be favorable for the biodiesel industry.

Some of our concerns in the proposal are the measures that would cap the use of soybean oil and canola oil as feedstocks for biofuels at 20% per company and apply burdensome sustainability guardrails that add cost without rewarding farming practices that lower carbon intensity scores.

This proposal has significant negative implications for soy-based biofuels. In

comments submitted by ASA and state soybean associations, the changes are concerning and lack scientific evidence that is required by law to be updated for these feedstocks. As an organization, we continue to push back on these anti-soy provisions.

In the months ahead, the soybean association and industry partners will work with CARB to support the role of agriculture in diversifying the fuel supply while reducing greenhouse gases and increasing clean air in California and beyond. Amid some of the challenges, the biofuels industry is just one piece of the puzzle in expanding value-added market opportunities for soybean farmers, providing certainty for the crops we produce.

As you work through harvest this fall, NSA and ASA volunteer leaders will continue guiding our advocacy work on your behalf. When you join NSA, your membership dues are what supports our policy work. I invite you to join us, contact our NSA office at 402-441-3239 to learn more about our membership and our special soybean seed bonus incentive.

I hope you all have a safe harvest.



Nebraska Soybean Association directors Myles Ramsey, Ken Boswell and Chandra Blasé visit with soybean growers about membership opportunities at the NSA booth during Husker Harvest Days.



4435 O Street, Suite 210
Lincoln, NE 68510
Phone: 402-441-3239

association@nebrasokasoybeans.org
nesoybeans.org

2024 President

Kent Grotelueschen, Octavia - **District 4**

State Directors

Brent Svoboda, Pender - **District 1**

Lucas Miller, Randolph - **District 2**

Clint Hostler, Grand Island - **District 3**

Doug Bartek, Wahoo - **District 5**

Daryl Obermeyer, Brownville - **District 6**

Wade Walters, Shickley - **District 7**

Craig Frenzen, Fullerton - **At Large**

Chandra Blasé, Hordville - **At Large**

Myles Ramsey, Kenesaw - **At Large**



A member-driven, grassroots policy organization that represents U.S. soybean farmers

American Soybean Association Directors

Dennis Fujan, Prague

Ken Boswell, Shickley

soygrowers.com

SOYBEANEBRASKA is printed four times a year by the Nebraska Soybean Association and managed by the Nebraska Soybean Board.

For address corrections, contact the Nebraska Soybean Association, 4435 O Street, Suite 210, Lincoln, NE 68510. Phone: 402-441-3239 Email: tom@nebrasokasoybeans.org

For advertising information in **SOYBEANEBRASKA**, please contact Larson Enterprises. Phone: 515-440-2810 Email: dave@larsonent.com

To contact the editor: Email: tom@nebrasokasoybeans.org Comments and statewide news articles should be sent to the above address. Advertising space reservations must be made by the first day of the month preceding publication. In consideration of the acceptance of the advertisement, the agency and the advertiser must, in respect to the contents of the advertisement, indemnify and save the publisher harmless against any expense arising from claims or actions against the publisher because of the publication of the content of the advertisement.

Staff Credits

Thomas Hoxmeier Editor, Staff Writer
Lori Luebbe Staff Writer
Wesley Wach Staff Writer
Dave Larson Sales Director



NEBRASKA SOYBEAN BOARD WELCOMES ELECTED AND RE-ELECTED MEMBERS

The Nebraska Soybean Board (NSB) held an election in July for board members in Districts 1 and 3, while the District 6 candidate ran unopposed. Meis will begin a new term after serving three consecutive terms on NSB. Hanson, new to the board, will start his first term. Tomes ran unopposed, so no election was held, and he will retain the position for another term.



Antelope, Boyd, Cedar, Holt, Knox, Madison and Pierce

Anne Meis

Elgin | Antelope County | Re-Elected

"I have learned so much about the soybean industry over the last nine years, and it is an honor to continue to serve and put this knowledge to work. The industry is poised for growth as we see new crush facilities being built in Nebraska."



Butler, Colfax, Dodge, Douglas, Sarpy, Saunders and Washington

Jay Hanson

Mead | Saunders County | Elected

"I am excited to be working as part of the Nebraska Soybean Board and continuing the excellent work that they have been doing. It's more important than ever, in the tough economic environment that we are currently experiencing, to invest checkoff dollars to the benefit of every Nebraska soybean producer. I look forward to serving on the board."



Filmore, Gage, Jefferson, Saline, Seward and Thayer

Mike Tomes

Utica | Seward County | Ran Unopposed

"I am really looking forward to another term on the Nebraska Soybean Board. Being involved in building relationships is an important goal of mine. My desired outcome is the continued growth in the use of Nebraska and U.S. soybeans. I welcome any concerns or input on any issue from my fellow Nebraska soybean producers as I represent District 6."

"Thank you to all the candidates who dedicated their time and energy to this year's election. As our industry evolves, I'm confident that our board will strategically invest your checkoff dollars in ways that drive value for every soybean farmer in Nebraska."

— ANDY CHVATAL, NSB EXECUTIVE DIRECTOR

→ *The elected board members will serve a three-year term beginning October 1, 2024, and ending September 30, 2027.*



Good for Your Land and Your Bottom Line

FARMER BENEFITS AND INCENTIVES

\$50
Per Acre

Financial Incentive

To help cover the start-up costs of cover crops, Farmers for Soil Health offers financial assistance of up to **\$50/acre** over a three-year period.


**INCREASE
Profitability**

Exclusive Marketplace

Enrollment in Farmers for Soil Health provides access to an exclusive future marketplace connecting farmers to top-tier supply chain partners that are focused on sustainability.

**LOCAL
TA Support**

Technical Advisor

Each state has dedicated on-the-ground technical advisors to provide research-based information and educational resources to aid in the transition of your field.



Learn more today! | FarmersforSoilHealth.com



PORK MONTH IN NEBRASKA



Celebrating Pork and its Connection to Soybeans

October marks the celebration of Pork Month, an opportunity to highlight the essential role pork production plays in Nebraska's agriculture and economy. Pork is a favorite on dinner tables across the state, and Nebraska's pork producers are the number one customers of soybean meal, making them invaluable to the state's soybean farmers.

Nebraska raises nearly 7.8 million pigs annually across 1,230 family farms, making it the sixth-largest pork-producing state in the U.S. These farms don't just provide high-quality pork, they also support the soybean industry by purchasing significant

quantities of soybean meal, a crucial ingredient in hog feed. This symbiotic relationship is vital for both industries, bolstering local economies and providing jobs.

According to a 2023 study by The Juday Group, pork and beef exports significantly impact Nebraska's corn and soybean industries. U.S. pork exports alone accounted for nearly 96.8 million bushels of soybeans, valued at \$1.36 billion. The study found that red meat exports, including pork, contributed an estimated 13.9% per bushel to the value of soybeans, emphasizing the importance of international markets for Nebraska's agricultural producers.

Nebraska's pork industry doesn't just benefit soybean farmers—it creates nearly 18,000 jobs and generates an annual economic impact of \$1.66 billion. Pork producers depend on high-quality feed inputs like Nebraska-grown soybean meal to raise healthy pigs and produce safe, nutritious pork for consumers across the U.S. and globally.

In addition to supporting Nebraska's economy, pork provides substantial nutritional benefits. A 3-ounce serving of pork delivers 22 grams of high-quality protein and includes all nine essential amino acids. Pork is rich in vitamins and minerals such as iron, zinc, phosphorus, vitamins B6 and B12, and thiamin, making it a great choice for supporting overall health and wellness. Pork is also typically lower in calories and saturated fat compared to other red meats. And even processed pork, such as cured ham and bacon, add such incredible flavor to so many foods, and they make us feel fuller longer.

As we celebrate October as Pork Month, it's important to acknowledge the strong partnership between Nebraska's pork and soybean farmers. Together, they produce high-quality protein that feeds not just our families but families around the world. So the next time you enjoy a pork chop or a slice of bacon, remember the hardworking farmers behind every bite.

Larry Zobel checks on his pigs, part of a six-generation family tradition at Zobel Family Farms near Bancroft, Nebraska.



We put soybeans first because you put performance first.



At Asgrow® brand, not only are we all about the beans, we're all about your success as well. That's why we offer localized products with leading genetics, weed management systems and maximum profit potential – all developed by soybean experts who put soybeans first.

DISCOVER HOW IT'S ALL ABOUT THE BEANS.

[Asgrow.com](https://www.asgrow.com)



AGP's David City Soybean Processing Plant on Track for 2025 Completion

Construction of AGP's new soybean processing and degumming facility in David City, Nebraska, is progressing. When complete, the state-of-the-art plant will be able to crush 150,000 bushels of soybeans per day. The plant will include material handling systems, wet bean storage, a preparation facility and an extraction facility with systems for meal and hull grinding, storage and loadout. Support facilities including a utility building, production office and maintenance warehouse are also being built.

Construction of the extraction facility is progressing well, with structural steel erection underway. Over 98% of the operating equipment required for the crush plant has been procured, with field-fabricated tank construction nearly finished. Rail construction is also advancing, and bean and meal silos have been erected. Foundations for receiving and loadout areas are complete, and equipment installation is in progress.

The facility will also include a crude oil degumming plant to produce feedstock for the renewable diesel industry and lecithin for the food and livestock feed sectors. About 95% of the degumming equipment has been procured.

In cooperation with David City and Butler County officials, significant strides have been made to complete the necessary utilities and road improvements. Construction of a new substation for permanent power is underway, city water distribution and wastewater treatment upgrades are progressing and natural gas infrastructure was completed in June 2024. Improvements to Road 37, including construction of the overpass, are also proceeding. AGP would like to thank the city and county for all their help in moving these critical infrastructure projects forward.

The project remains on schedule, with the facility expected to be operational by the third quarter of 2025.



EXTREME REACH EASIER UNLOADING



The X-Treme® grain carts feature a patented front-folding design that angles the auger upward, outward and forward for the easiest unloading and greater visibility of the downspout. This direct line of sight to the downspout from the side window of the tractor cab eliminates the need to twist around during unloading, reducing fatigue and increasing unloading accuracy. Models are available in capacities from 1,500 to 1,000 bushels and include a standard four-way directional downspout, a 21" sump auger that unloads grain up to 650 bushels per minute, and your choice of high-flotation single tires or tracked undercarriage.

X-TREME
19-SERIES
SINGLE-AUGER GRAIN CARTS



FRONT-FOLD GRAIN CARTS



STREAMLINE YOUR HARVEST OPERATION.
Visit UMequip.com or see your nearest dealer today.

**INNOVATING
THE FUTURE OF
AGRICULTURE**

UNVERFERTH MFG. CO., INC.
P.O. BOX 357, KALIDA, OH 45853 • UNVERFERTH.COM • 419.532.3121

WISHH drives your soybean meal *to new markets*



wishh.org



ON Track

WITH RENEWABLE FUELS

A Conversation with Thad Call, Union Pacific's General Director – Sustainability

Nebraska Soybean Board (NSB):

Union Pacific has set targets for increasing the use of low-carbon fuels. What motivated this shift toward renewable diesel and biodiesel, and how do these fuels align with your broader sustainability goals?

Thad Call (TC): Union Pacific is striving to reduce our carbon footprint and be a part of the climate solution by proactively seizing and exploring opportunities to reduce our greenhouse gas (GHG) emissions, including exploring the use of biofuels and testing battery-operated locomotives.

Over 94% of Union Pacific's direct GHG emissions are related to locomotive emissions, which is a large focus of the railroad's current decarbonization efforts. Union Pacific is making immediate reductions in our GHG emissions by operating our network more efficiently and enhancing locomotive technology to improve their reliability and fuel efficiency.

Meeting our bold climate goals cannot depend on operational excellence and fuel efficiency alone. A key enabler of meeting our 2030 GHG reduction target

is increasing our utilization of renewable, low-carbon fuels in our locomotives.

In 2021, we announced a goal to increase our renewable fuel usage to 10% of our total diesel consumption by 2025, and 20% by 2030. Since committing to increase our use of biofuels, we have made consistent progress. In 2023, our consumption of low-carbon fuels reached 6.1% of total diesel used—up from 4.5% in 2022, and a five-fold increase from 2018.

NSB: Are you currently testing B20 biodiesel and R55 renewable diesel? What challenges and opportunities have you encountered during these trials?

TC: Union Pacific is currently collaborating with Wabtec, one of the rail industry locomotive manufacturers, and Canadian National (CN) on biofuel testing. Union Pacific began operating locomotives on 100% biofuel in the second quarter 2022. Four Wabtec locomotives using Chevron Renewable Energy Group's UltraClean BlenD™—a B20/R80 blend (20% biodiesel and 80% renewable diesel)—are running in California between UP's West Colton rail yard in Bloomington and a sand and gravel mine in San Bernardino.

In 2023, Union Pacific and CN joined forces to test a blend of renewable fuels on two classes of locomotives at the MxV rail testing facility in Pueblo, CO. Union Pacific is testing FDLA engines with R99 fuel, while CN tests the B20R80 biofuel blend.

Beyond testing renewable fuels in our locomotives, we continue working to understand what additional long-term maintenance requirements will be required as we use greater amounts of biofuels.

NSB: How is Union Pacific working with engine manufacturers to increase the percentage of biofuels in your locomotive fleet?

TC: Union Pacific has continued our partnership with locomotive manufacturers and fuel suppliers to test higher levels of renewable biofuels in our locomotives. In 2023, positive results led to the manufacturers authorizing the utilization of biofuel blends of up to 50% renewable diesel and 11% biofuel in locomotives going forward.

NSB: Can you elaborate on the environmental benefits Union Pacific expects to achieve by increasing its use of biodiesel and renewable diesel?



Photo Credit: Union Pacific

TC: Gallon for gallon, biofuels reduce our carbon footprint by more than 79% compared with traditional diesel on a lifecycle basis. (Source: Argonne National Labs). Additionally, according to our partners at Clean Fuels Alliance America, utilizing biodiesel fuels can reduce particulate emissions which improves public health.

NSB: What role do Nebraska soybeans play in Union Pacific's renewable fuel initiatives, and how do you see this relationship benefiting both the transport industry and local farmers?

TC: Biofuels and sweeteners are the second-largest commodity Union Pacific ships in the state of Nebraska. The railroad's east-west line across the state is one of the nation's busiest, safely, reliably and efficiently transporting grain, corn, sand, fertilizer and coal.

NSB: How do you envision the future of sustainable rail transport?

TC: At Union Pacific, we envision the future of sustainable rail transport as a comprehensive effort to reduce GHG emissions while enhancing operational efficiency. Our climate action plan focuses

on increasing renewable fuel utilization, modernizing locomotives and piloting hybrid and zero-emission technologies. We're also committed to reducing emissions across our entire supply chain and collaborating with suppliers and industry partners to drive sustainable practices. By offering low-carbon transportation solutions, we aim to help customers shift their shipments to rail, contributing to a greener future for freight.

NSB: What is something farmers and Nebraskans might be surprised to know about Union Pacific or the Nebraska rail system?

TC: Farmers and Nebraskans might be surprised to learn that Union Pacific transported 50,000 carloads of soybeans across the U.S. in 2023, with Nebraska playing a key role in that volume. Union Pacific operates one of the nation's busiest rail corridors across the state, moving grain and essential commodities like biofuels,

sand and fertilizer. Additionally, Bailey Yard in North Platte is the world's largest classification yard, handling about 10,000 rail cars daily. These facts highlight Union Pacific's essential role in transporting Nebraska's agricultural products efficiently and sustainably.



View the Building America report, specifically pages 46-48, for more information on Union Pacific's renewable fuels strategies.

FARMER-FOCUSED

Discover how we're building value and programming for Nebraska farmers through Farmer Support.

15 | Your Go-To Ag Market Tools

Empowering Nebraska farmers with market insights through the Weekly Market Roundup and Grain IQ.

16-17 | Broadcasting Agriculture's Future

How the Rural Radio Network and NSB partner to inform, innovate and inspire the ag industry.

19 | Soybean Farmers Invest \$1.3M to Expand Soybean Meal Exports

New investment will enhance port capacity and support major upgrades.

20-21 | Prepare for Soybean Cyst Nematode Sampling Season

Take advantage of free SCN testing as the 2024 field season wraps up.

22 | Two Organizations Working for You

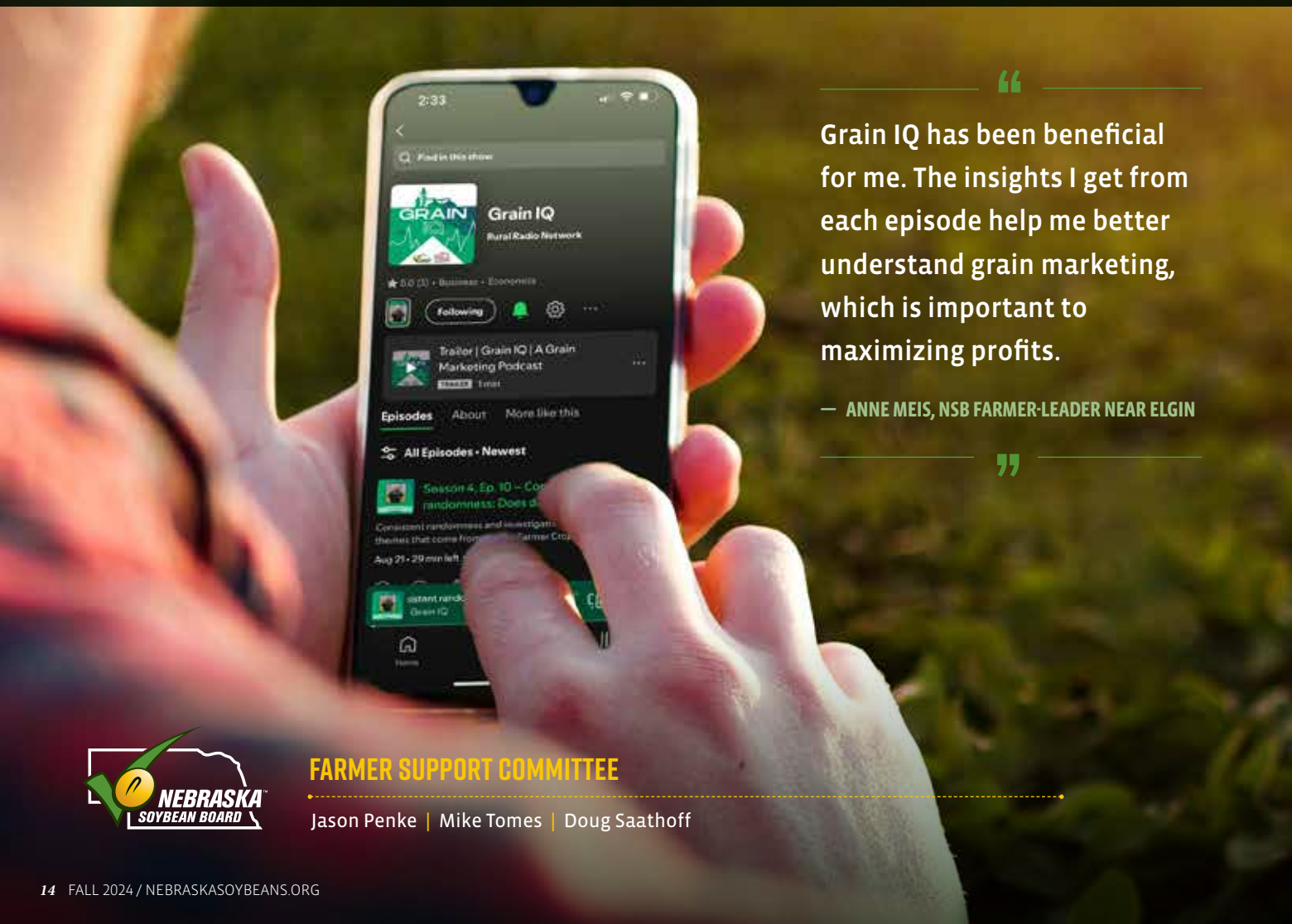
How NSA and NSB work to support you through membership and the checkoff.

24-25 | Leading On-Farm Innovations

Meet Adam Leise, the new Nebraska On-Farm Research Network Director.

26-27 | Spotlight on Soybean First Purchasers

Appreciating a key contributor to the soybean checkoff process.



“ Grain IQ has been beneficial for me. The insights I get from each episode help me better understand grain marketing, which is important to maximizing profits.

— ANNE MEIS, NSB FARMER-LEADER NEAR ELGIN



FARMER SUPPORT COMMITTEE

Jason Penke | Mike Tomes | Doug Saathoff

YOUR GO-TO AG MARKET TOOLS

Nebraska farmers are always looking for reliable, timely information to help them make informed decisions about their operations. Two programs supported by the Nebraska Soybean Board are providing just that: The Weekly Market Roundup and Grain IQ. These resources are part of the Farmer Support area of the Nebraska Soybean Board's strategic plan, offering valuable insights on weekly markets and grain marketing topics.

The **Weekly Market Roundup**, available digitally and on the Rural Radio Network, delivers market analysis and key updates every week. Farmers and ranchers can rely on this program for the latest information on commodity prices, weather forecasts and industry news. The Roundup features in-depth discussions with market analysts and brokers who share their expertise to help

producers navigate the ever-changing commodity markets.

Similarly, the **Grain IQ Podcast** dives deeper into grain marketing topics. This podcast, a partnership between the Nebraska Rural Radio Association and the Nebraska Soybean Board, covers everything from the basics of grain marketing and trade to market trends and logistics. Listeners hear from industry experts, gaining perspectives on factors that impact grain marketing, like weather conditions and supply chain issues.

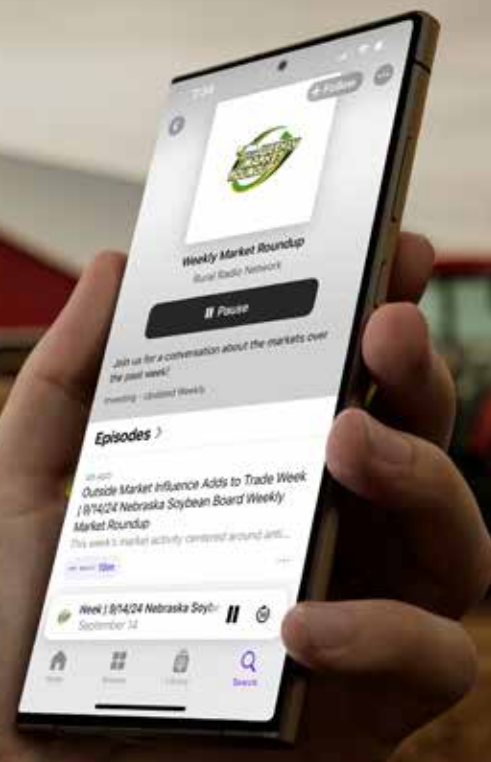
Available on multiple platforms, Grain IQ provides a convenient way for farmers to stay informed on the go. Recent episodes provide critical information to help farmers navigate the market, such as *Season 4, Episode 3*, which dives into the impact of South American agriculture, particularly Brazil and Argentina, on U.S. grain markets. And in *Season 4, Episode 9*, Dr. Ken Hellevang explains the factors farmers should consider when incorporating on-farm grain storage into their marketing plans.



Farmers can catch the **Weekly Market Roundup** and **Grain IQ Podcast** on platforms like Spotify, Apple Podcasts, YouTube or ruralradionetwork.com. Be sure to subscribe to these programs wherever you listen to stay up to date on the latest market information that will help you make informed decisions and succeed in today's ag markets.

“ One of the biggest challenges we face is knowing when and how to act on market trends. The Weekly Market Roundup breaks it all down, helping me stay ahead and make more informed decisions for my farm. ”

— JASON PENKE, NSB FARMER-LEADER
NEAR CRAIG



Broadcasting Agriculture's *Future*

How the Rural Radio Network and Nebraska Soybean Board Partner to Inform, Innovate and Inspire the Ag Industry

As a trusted voice for farmers across 14 radio stations and seven states, the Rural Radio Network (RRN) continues to expand its support for agriculture through strategic partnerships, innovative programming and a commitment to nurturing the next generation of agriculture broadcasters.

In 2017, RRN, with just one employee, opened the Nebraska Soybean Board Studios at Nebraska Innovation Campus (NIC) in Lincoln. By 2019, they had quickly outgrown the space and moved to a larger hub on the third floor of the campus. Now, seven years later, RRN operates from a state-of-the-art facility featuring two full-service radio studios, a television studio, a boardroom, four offices and more.

With support from the Nebraska Soybean Board (NSB), the space allows for business and industry collaborations that strengthen the agricultural community through meaningful partnerships and initiatives.



Bryce Doeschot connects with a Rural Radio Network station.

STRATEGIC PARTNERSHIPS

The formative partnership between NSB and RRN is the foundation for continued growth and success. This collaboration has enabled the only farmer- and rancher-owned radio group in the country to develop new programming and foster young professionals with an interest in agricultural communications.

NSB has been pivotal in supporting RRN's mission, from producing soybean-specific news coverage to sponsoring impactful opportunities like the "See for Yourself" tour.

In 2023, through NSB's sponsorship, Rural Radio Network's Alex Makovicka traveled to the Pacific Northwest to join soybean farmers for the three-day event. During the tour—which included visits to ports, aquaculture facilities and other businesses that use soybeans—she conducted interviews with farmers to capture their experiences and insights. These interviews were shared with listeners, providing valuable firsthand accounts of the global impact of Nebraska soybeans.

Beyond the tour, this partnership allows RRN to deliver timely, relevant information that helps farmers make critical business decisions while highlighting the broader influence of the soybean industry.



The Nebraska FFA State Officer Team interviews with Alex Makovicka.

For example, the Combine AgTech Incubator at NIC is a central hub for cutting-edge agriculture technology and innovation. With the RRN studios located on the same campus, RRN has firsthand access to the latest developments in ag technology. This proximity enables us to cover stories right from the heart of innovation, sharing insights on how new tools and advancements are shaping the future of agriculture.

INNOVATIVE PROGRAMMING

At its core, RRN provides real-time market updates, analysis and agriculture news to 14 stations across Nebraska. While radio remains incredibly relevant, reaching 82% of adults in America weekly, we also recognize that media consumption has shifted to various digital platforms.

With NSB's support, RRN launched the "Grain IQ" podcast—a comprehensive



Ella Stiefvater, the 2024 Rural Radio Network intern, delivers audio and video agriculture news reports from the Nebraska Soybean Board Studios.

resource designed to equip producers with the tools and knowledge needed to excel in grain marketing. Covering topics from the fundamentals of grain marketing to advanced strategies for developing a marketing plan, the Grain IQ podcast has reached thousands of producers across Nebraska and beyond.

In addition to Grain IQ, other podcasts such as Weekly Market Roundup, Cattle Call, Breaking the Barrier and Building Nebraska have also launched from the RRN studios, expanding the reach of agriculture and rural Nebraska to a broader audience.

THE NEXT GENERATION

Growth and innovation at RRN would not be possible without NSB and the talented interns who contribute to its success.

RRN has three full-time broadcasters who began their careers as interns with the network, highlighting the importance of investing in young professionals passionate about agriculture broadcasting.

Each summer, RRN hosts an intern, offering hands-on experience from day one. Interns contribute to newscasts, event coverage, digital media and video production, becoming an integral part of the team and helping shape the future of agricultural media.

“The internship exceeded my expectations,” said Ella Stiefvater, the 2024 summer intern. “I ended up doing way more than I thought I’d be trusted to do... I really loved getting to tag along to press conferences, field trips and especially World Pork Expo.”

As the media landscape evolves, interns bring fresh perspectives, helping RRN create more meaningful content that meets consumers where they are.

FARMER SUPPORT

At the core of RRN is a deep commitment to supporting farmers who rely on timely, accurate information to make critical decisions. From real-time market updates and news to in-depth interviews with agricultural leaders, RRN ensures that Nebraska farmers are well-informed and prepared for the challenges and opportunities in the industry.

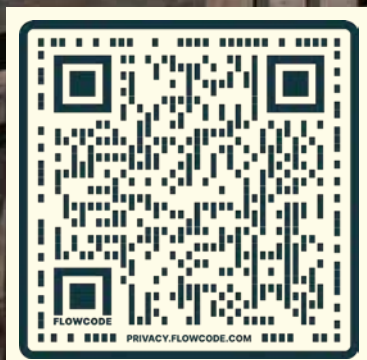
None of this is possible without the support of farmers and the Nebraska Soybean Board, whose partnership enables the RNN to continue their mission of serving farmers and advancing agricultural communications across the region.



During the 2023 See For Yourself tour, Nebraska soybean farmers and RRN visited the Pacific Northwest to explore key facilities and operations that rely on Nebraska-grown soybeans.



WISHH leverages partnerships *for U.S. Soy to help meet the protein needs of 8 billion consumers*



wishh.org

Soybean Farmers Invest \$1.3M to Expand Soybean Meal Exports

In July of this year, soybean farmer-leaders presented a \$1.3 million ceremonial check to the Port of Grays Harbor in Washington state to support its Terminal 4 Expansion and Redevelopment Project. This initiative is crucial as it aims to enhance the capacity of the Port, a key hub for U.S. soybean meal exports. The Port of Grays Harbor will use these funds for major upgrades, including additional storage and a new ship loader. These improvements are expected to double the port's annual soybean meal export capacity from 3 million to over 6 million metric tons by late 2025 or early 2026.

In order to accommodate this growth and investment, the Port of Grays Harbor will add 40,000 ft. of railroad track, build a new fendering system and stormwater collection and treatment facility, and create more than 30 acres of additional

“

We are incredibly proud of the role the Port plays in exporting the crops you grow that help feed millions worldwide.

— PHIL PAPAC, PRESIDENT OF THE PORT OF GRAYS HARBOR COMMISSION

”

cargo storage area. These investments will allow the port to efficiently handle the increased volume of soybean meal while mitigating the surface traffic impact to the local community.

The funding commitment comes from several soybean organizations, including the United Soybean Board, the Soy Transportation Coalition and the Nebraska Soybean Board. This joint effort was announced in fall 2022, and the ceremonial check presentation was part of the Soy Transportation Coalition's summer board meeting held in Vancouver, WA.

Doug Saathoff, Nebraska Soybean Board district director and Soy Transportation Coalition board member, emphasized the importance of the investment, "The \$1.3 million investment in the Port of Grays Harbor is a testament to our commitment to enhancing soybean meal exports. This project strengthens our supply chain and ensures that U.S. farmers remain competitive on the global stage."

This expansion project underscores the broader trend of increasing soybean processing and export capabilities across the U.S., driven by growing demand for soybean oil in the renewable energy market. It represents a strategic move to bolster U.S. soybean meal exports and enhance market access.

The U.S. Maritime Administration approved a \$25.5 million grant for this project in October 2022. This grant, combined with the farmer organizations' contribution, helps accelerate project completion and boost its scale. The investments by soybean farmers highlight their role in supporting infrastructure projects that enhance global competitiveness and supply chain efficiency.

As Lowell Wilson, Chairman of the Board of AGP noted, "This project will significantly improve speed, capacity and product availability, strengthening the link from the farmer to international customers."



Top: STC farmer-leaders tour Ag Processing Inc's export facilities at Terminal 2 at the Port of Grays Harbor. Bottom: STC farmer-leaders and attendees present the ceremonial check near the expansion area at Terminal 4. (Image Credit: Missouri Soybean Association)



PREPARE FOR SOYBEAN CYST NEMATODE SAMPLING SEASON

By Dylan Mangel, Assistant Professor and Extension Plant Pathologist at the University of Nebraska-Lincoln

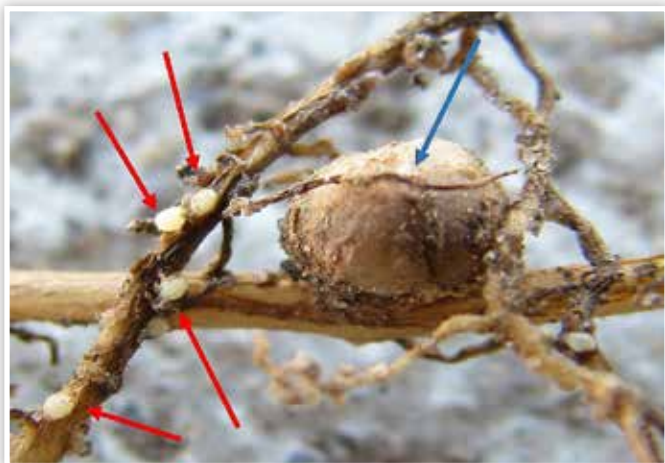
As the 2024 field season ends, it's time to start preparing to test for soybean cyst nematode (SCN). Even if you didn't see SCN in your field, it doesn't mean it's not stealing yield. Especially in years with sufficient rainfall, visible plant disease symptoms can go unnoticed. For this reason, testing soils continues to be the only effective way to identify which fields are infested with the parasite. The Nebraska Soybean Board supports free SCN testing for Nebraska growers.

If you are interested in testing, the easiest way to get started is by contacting your local Extension office or the UNL Plant & Pest Diagnostic Clinic. Sampling for SCN is as simple as collecting soil from the top 6 inches of the root zone. You can sample at any point in your rotation, but a convenient time is the window from soybean harvest until the ground freezes. This is the point at which SCN will be at its highest levels in the soil.

SCN management has always consisted of planting resistant soybean varieties, rotating to a non-host crop like corn and considering a nematode-protectant seed treatment. In recent seasons, the biggest change to these management recommendations has been to increase a focus on shifting which type of resistant soybean varieties you select. While most varieties contain the resistance source "PI88788" (seed catalogs often list the resistance source for each variety), it has diminished in effectiveness against the pest to a usable but not ideal level. Simultaneously, the resistance source "Peking" continues to become more available and has consistently outperformed "PI88788" for yield in variety trials when SCN is present. For these reasons, I recommend that growers incorporate the "Peking" resistance source into their soybean rotation but also continue to rotate other resistance sources to prevent resistance gene breakdown of any single resistance source.

While we currently only have two widely available resistance sources, researchers have been hard at work to identify the next generation of SCN management options. A checkoff-funded group led by Melissa Mitchum has researched the mechanism that allows SCN to overcome certain resistance sources and worked with breeders to identify new resistance genes. Ultimately, this research will help identify mechanisms that can be used for future control.

We currently see awareness as our biggest challenge to recovering some of the estimated \$1.5 billion that this parasite costs growers annually. For this reason, Nebraska is hosting the North Central Soybean Research Program component of The SCN Coalition outreach and awareness project. This will bring checkoff-funded support back to our state and help increase awareness to new growers.



Larger Rhizobium nodule (blue arrow) and several white SCN females (red arrows) on neighboring roots. Note the size difference and that SCN are much smaller than nodules. (Photo by Kyle Broderick)



Counting SCN eggs from field samples.

Additionally, there are other control opportunities on the horizon. BASF recently announced Nemasphere, the first biotechnology trait for SCN. Syngenta recently announced its new active ingredient TYMIRIUM, which is

said to provide long-lasting protection against plant-parasitic nematodes and soil-borne diseases. It will take time for these solutions to reach the market, and when they do arrive, we will still need to incorporate varietal resistance. So, it's important to continue to rotate available resistance sources to help them last as long as possible. Biologicals are another new option entering the market. FMC has new biofungicide/bionematicides (Avodigen and Zironar) that they present as "a compliment to conventional crop protection." For information on these and additional control options, seek advice from your local advisors at Nebraska Extension.

Remember that management of SCN is necessary at any level. Rotate to a non-host crop, try a different resistant variety and consider a nematode protectant seed treatment. The first and last step for SCN management is testing. If you are interested in free testing or have questions about SCN, please contact the UNL Plant & Pest Diagnostic Clinic or your local Extension Office.

Dylan Mangel probes the soil and tests for SCN with the free soil testing kits that farmers can find at their local Extension office.



For more information on the SCN sampling procedure, visit: <https://cropwatch.unl.edu/2023/its-season-controlling-soybean-cyst-nematode>

TWO ORGANIZATIONS WORKING FOR *You*



Your Membership Supports You Here

What do Nebraska soybean farmers consistently rank as a top concern? State and federal regulations. The Nebraska Soybean Association (NSA) provides Nebraska soybean farmers with leadership in promoting effective policies and legislation. NSA represents its members on a state and federal level while working cooperatively with the American Soybean Association. The primary focus of NSA and ASA is assuring sound policy and regulatory decisions are made in Lincoln and Washington D.C. that support soy industry priorities.

Both organizations work on policy issues impacting soy growers including farm bill policy, trade, biotechnology, transportation, infrastructure, biofuels, sustainability, regulatory decisions and more.

Soybean checkoff dollars cannot be used to lobby or for legislative activities, which is why your NSA membership is vital to the profitability and sustainability of the industry in Nebraska. Consider joining our efforts to ensure Nebraska soybean farmers remain strong in protecting and promoting our industry.



Visit nesoybeans.org to learn more.

Your Checkoff Supports You Here

The Nebraska Soybean Board (NSB) directs the state's efforts in utilizing soy checkoff dollars to benefit soybean farmers. Established through a provision in the 1990 Farm Bill, the checkoff program requires soybean farmers to contribute 0.5% of the market price per bushel. Half of this goes to the United Soybean Board (USB) for national initiatives, while the other half stays within the state through NSB.

Led by nine volunteer farmers, NSB focuses on production research, marketing, promotion, product development and education to maximize profit opportunities for Nebraska's soybean farmers.

The mission is to grow value for farmers by maximizing their checkoff investments. NSB's initiatives include Farmer Support, which encourages information sharing and collaboration among Nebraska's farmers; Production & Crop Research, which funds projects to improve soybean production and quality; Community Engagement, aimed at showcasing Nebraska farms and educating the public and Demand & Utilization, which promotes the versatility, sustainability and economic impact of soybeans for food, fuel and industrial uses.



Visit nebrasikasoybeans.org to learn more.

ALWAYS LEAVE IT BETTER THAN YOU FOUND IT.

Through the soy checkoff, U.S. soybean farmers are investing in new production practices to continuously improve their sustainability while protecting the air, water and soil for generations to come.

unitedsoybean.org



@UnitedSoybeanBoard



@UnitedSoybean



LEADING ON-FARM *Innovations*

Meet Adam Leise, Nebraska On-Farm Research Network Director

Soybean Nebraska recently caught up with Adam Leise, newly appointed Director for the Nebraska On-Farm Research Network (NOFRN), to discuss his new role and NOFRN's mission to work with producers on critical production, profitability and natural resource questions.

Raised on a farm and ranch in Hartington, NE, Leise developed a love for being outdoors and in the field. After graduating from Cedar Catholic High School, he pursued a degree in Ag Economics from the University of Nebraska-Lincoln. Following two years of Catholic mission work in Maryland, he returned to Nebraska to pursue a master's in agronomy under the supervision of Dr. Amit Jhala, graduating in 2024 with a thesis on innovative See & Spray™ weed technology.

Today, Leise says he's thrilled to be working with NOFRN, where he has the opportunity to meet and collaborate with Nebraska producers.

"NOFRN works directly with farmers to help them achieve their short- and long-term goals," he said. "That could be anything from improving yields to increasing soil organic matter to preserving the land for future generations."

"We aim to find where profitability and sustainability intersect," he continued, explaining that it happens by working side-by-side with producers to conduct research trials, interpret results and apply what has already been learned in the field. "When we work together, we can address challenges and push the industry forward."

On a daily basis, Leise has the chance to meet with many different growers and help them pursue their unique goals. "I believe that understanding what works best for each farmer on their own farm is crucial. Every farm is different—there is no silver bullet." He also enjoys working with members of Nebraska Extension and the agricultural research community. "We aim to provide tangible results that can be put to use in the field. We also help farmers answer questions and make informed decisions that will benefit their operation."

When asked about his advice for growers today, Leise noted that farming is an ever-evolving industry. "The techniques we use today are different than they were 50 years ago, and the way we farm in 50 years will likely be different from what we're doing now," he said.



He believes one of the keys is to keep asking questions and continually striving to improve. “I think every farmer today has the opportunity to strive to be better. I encourage every producer to strive for increased yields and profitability on their own acres.”

“Part of our role at NOFRN,” he continued, “is to motivate farmers to conduct research on their own farms and test methods, products and systems with the machinery available to them.”

Leise says that what motivates him the most in his collaborative work with farmers is being part of positive change. For example, seeing a farmer adopt a new method that increases soil organic matter or embracing regenerative crop practices that will allow for higher yields in future generations. “I’m also passionate about

efficiency—the details that maximize profit per acre and being diligent with our acres. Being smarter about the nutrients and chemicals we’re putting into the ground. More acres isn’t necessarily the answer. It’s often about being smarter with the acres we have.”

He says Nebraska’s agricultural diversity is one of its greatest strengths. “We have farmers who are knowledgeable about many different things and diverse cropping systems as well. This diversity allows us to learn from each other and adapt best practices to our unique situations. It’s our job at NOFRN to help each farmer identify what works best for them on their own farm.”

Ultimately, Leise says his role at NOFRN is about helping producers make progress today while paving the way for tomorrow.



Adam Leise

“Continuous learning and research are a big part of our industry’s future. The way we farm is constantly changing and it’s crucial that we stay ahead of the curve. That’s why at NOFRN, we encourage farmers to conduct research on their farms and test new methods, products and systems. We’re here to provide the support and resources they need to make that possible.”



SPOTLIGHT ON

SOYBEAN

FIRST PURCHASERS

As Nebraska's co-ops, storage facilities and soybean processors fill with a fresh harvest of locally-grown soybeans, it's the perfect time to recognize a key group in our agricultural success—Nebraska soybean first purchasers.

First purchasers are more than just the initial buyers of soybeans. They also handle, as required by law, the farmer contribution of one-half of 1 percent of the price of each bushel at the point of sale. This small contribution becomes a strong driver for our industry's growth, funding research and promotional activities that boost profit opportunities for hard-working farmers and other stakeholders.

Beyond being the initial point of sale, first purchasers are essential partners in the soybean supply chain, ensuring that

the process from farm to market runs smoothly. By offering essential storage, handling and processing capabilities, they help maintain the quality of Nebraska soybeans and provide logistical support to meet the demands of both domestic and global markets. Their infrastructure and services are important in keeping soybeans moving efficiently from fields to the consumers and industries that rely on them.

In addition, first purchasers play a crucial role in maintaining strong relationships with farmers and industry partners. Their daily work supports the long-term success of Nebraska grain producers by fostering trust and collaboration within the sector. Their efforts not only strengthen the industry but also support rural communities and the local economy.

Overall, the soybean checkoff wouldn't be possible without first purchasers who work hard to ensure checkoff funds are collected efficiently and effectively.

From the Panhandle to the eastern end of the state, we celebrate the immense value of our first purchasers. The Nebraska Soybean Board looks forward to strengthening relationships with these key players. After all, the checkoff system isn't just a line item on a receipt—it's an investment in our future.

As we celebrate and work hard on another harvest, we extend our gratitude to our soybean first purchasers. Their behind-the-scenes efforts are pushing our industry forward—and keeping Nebraska growing.



Nebraska Soybean First Purchasers

81-20 Grain, LLC

Randolph, NE

ADM - Fremont

Fremont, NE

ADM - Lincoln

Lincoln, NE

Ag Partners Cooperative Inc

Hiawatha, KS

Ag Processing Inc - Chester

Chester, NE

Ag Processing Inc - Fairfield

Fairfield, NE

Ag Processing Inc - Hastings

Hastings, NE

Ag Processing Inc - Omaha

Omaha, NE

Ag Processing Inc - Rosemont

Rosemont, NE

Ag Processing Inc- Cowles

Cowles, NE

Ag Valley Co-Op

Big Springs, NE

Agrex Inc - Enola

Norfolk, NE

Agrex Inc - Superior

Superior, NE

Ainsworth Feed Processing, LLC

Columbus, NE

Anderson Seed

Odell, NE

Ashton Feed & Grain

Ashton, NE

Atkinson Feed & Supply

Atkinson, NE

Aurora Cooperative

Aurora, NE

Bancroft Grain, LLC

Bancroft, NE

Belden Grain, LLC

Belden, NE

Bolte Enterprises

Henderson, NE

Bossen Livestock Company, Inc

Arcadia, NE

Bruning Grain & Feed Co.

Bruning, NE

Butte Farm Supply Inc

Butte, NE

Carroll Grain, LLC

Carroll, NE

Central Valley Ag

York, NE

CGB Enterprises Inc

Falls City, NE

Clark Grain Company

Johnson, NE

Colon Elevator Co

Colon, NE

Commodity Solutions Inc

Norfolk, NE

Cooperative Producers Inc

Hastings, NE

Cooperative Supply Inc

Dodge, NE

Country Partners

Gothenburg, NE

Cooperative

Gothenburg, NE

Crossroads Cooperative

Sidney, NE

Dennis Commodities, LLC

O'Neill, NE

Dixon Elevator Co

Dixon, NE

Elkhorn Valley Grain &

Processing, LLC

Wahoo, NE

Elys Inc

Guide Rock, NE

Farmer's Cooperative

Elevator Company

Hemingford, NE

Farmers Co-Op

Pilger, NE

Farmers Co-Op Association -

Lindsay

Lindsay, NE

Farmers Co-Op Grain &

Supply - Trenton

Trenton, NE

Farmers Cooperative

Dorchester, NE

Farmers Cooperative Co -

Talmage

Talmage, NE

Farmers Pride

Battle Creek, NE

Farmers Union

Clarkson, NE

Farmers Union Co-Op Friend

Friend, NE

Fordyce Non-Stock

Cooperative

Fordyce, NE

Frenchman Valley Co-Op

Imperial, NE

Frontier Cooperative

Lincoln, NE

GBB Grain Company

Norfolk, NE

Geneva Milling Company

Geneva, NE

Grain State Soya Inc

West Point, NE

Grovijohn Feed & Seed

Howells, NE

Hansen-Mueller

Omaha, NE

Herbert Feed & Grain Co

Verdigre, NE

Home City Grain

Falls City, NE

Husa Seed Farms

Wymore, NE

Husker Genetics

Ithaca, NE

J.E. Meuret Grain Company

Brunswick, NE

Kaapa Ethanol Holdings, LLC

Kearney, NE

Kassik Milling Company

Milligan, NE

Kaup Seed & Fertilizer

West Point, NE

Knabe Ag Enterprises, LLC

Wymore, NE

Knobel Seeds

Fairbury, NE

Kroeker Grain & Lumber

Company Inc

Henderson, NE

Lorensen Lumber & Grain, LLC

Pender, NE

Manning Grain

Fairmont, NE

Mathiesen Grain Co

Blair, NE

Nebraska Irrigated Seeds

Fontanelle, NE

Norder Supply Inc

Hebron, NE

Norfolk Crush

Norfolk, NE

North Bend Grain Company

North Bend, NE

North Side Grain

Laurel, NE

NSG Logistics, LLC

Gothenburg, NE

Ochsner Grain Company

Madison, NE

Opins Co-Op

North Bend, NE

Pender Elevator Grain Inc

Pender, NE

Pride Grain

Long Pine, NE

Prinz Grain & Feed Inc

West Point, NE

Ruben Wehnes

Inland, NE

S&G Commodities

Omaha, NE

Salem Grain Company Inc

Falls City, NE

Schaefer Grain Company

Plainview, NE

Scribner Grain & Lumber

Company

Scribner, NE

Seed Enterprises Inc

West Point, NE

Seven Valleys Grain

Callaway, NE

Shaw Grain, LLC

Edgar, NE

Shickley Grain Company

Shickley, NE

Sunrise Foods International

Pender, NE

The Arc Group, LLC

Lincoln, NE

Thimm Farms Inc

Beatrice, NE

Tinsley Grain Inc

Neligh, NE

Trotter Feed & Fertilizer

Ansley, NE

Trotter Feed & Fertilizer

Ansley, NE

Trotter Grain - Litchfield

Litchfield, NE

Trotter Grain & Fertilizer -

Arcadia

Arcadia, NE

Trotter Grain & Fertilizer -

Loup City

Loup City, NE

Trotter Grain & Fertilizer -

Sargent

Sargent, NE

Tyson Elevators

Blair, NE

Union Grain Company

St Libory, NE

Wellington Technologies, LLC

Beatrice, NE

West Plains, LLC

Omaha, NE

SAN DIEGO | JANUARY 20-23, 2025



The Biggest Event in Clean Fuels.

For the latest on biodiesel, renewable diesel and sustainable aviation fuel, join us at the 2025 Clean Fuels Conference. Learn more about the top energy issues of our time and connect with the key players in the clean fuels industry.

Register at CleanFuelsConference.org.



Materials supported by United Soybean Board,
soybean farmers and their checkoffs.

FUELING YOUR FARM

Biodiesel Program Offers Incentive for Farmers

The Nebraska Soybean Board (NSB) is encouraging farmers to utilize higher blends of biodiesel in their operations and providing an incentive to do so through the On-Farm Biodiesel Credit Program. Biodiesel, with soybean oil as the primary feedstock, is a drop-in replacement to petroleum-based diesel and is available for purchase in Nebraska. Increased usage and demand for biodiesel improves the bottom line for Nebraska farmers through marketing and through its lubricity, meaning less engine wear and higher component life without reduced performance. Most importantly, it is a domestic product that keeps value from going elsewhere.

The On-Farm Biodiesel Credit Program provides fuel reimbursements to those filling an on-farm tank being used in an agricultural operation. Rates are as follows: 25 cents per gallon for B2 and 50 cents per gallon for B5 and above. Farmers can receive up to \$500 in fuel reimbursements per operation through the program. Applications can be filled out online or mailed to NSB, with fuel receipts included that show the blending percentage.

Checkoff dollars have contributed significantly to the development of biodiesel markets. In Nebraska, biodiesel can be found in blends of B5-B20 at over 37 retail locations, while also being delivered to farms for use in equipment and other diesel engines. Ask your local fuel supplier about biodiesel availability, and visit biodieselne.com or nebraskasoybeans.org.

“We want the Nebraska Soybean Board to be a resource for farmers,” said Wesley Wach, demand and utilization coordinator for NSB. “Using a product grown here in Nebraska to fuel our equipment just makes sense, and we want to do our part to help make that happen.”

Have questions about using biodiesel? Contact the Biodiesel Helpline at (800) 929-3437 to talk to an expert, or email info@megcorpnmn.com. More information can also be found at megcorpnmn.com.

Due to the demand for renewable fuels, Nebraska is seeing an expansion in its soybean crushing capabilities to accommodate the higher demand for soybean oil, improving the bottom line for Nebraska farmers through a sustainable, home-grown product.

“

There are a lot of concerns and myths out there about using biodiesel, and we want to help address those and provide solutions.

— WESLEY WACH, NSB DEMAND & UTILIZATION COORDINATOR

”

Online Application Here:





INDONESIA

An Encouraging Market for Nebraska Soybeans

By Wesley Wach, NSB Demand & Utilization Coordinator

From July 14-23, the Foreign Ag Service (FAS) in Jakarta, Indonesia, hosted a 25-member agricultural trade delegation led by Nebraska Lieutenant Governor Joe Kelly and Nebraska Department of Agriculture Director Sherry Vinton. The delegation aimed to promote Nebraska ag products and explore market opportunities in Indonesia. The Nebraska Soybean Board (NSB) was represented on the mission by Eugene Goering, a farmer from Columbus, NE, and NSB staff member Wesley Wach. The delegation represented various agricultural business sectors and promoted products like soybeans, soybean meal, beef, pork, corn and popcorn.

Indonesia, with a population of 275.5 million, is the fourth-most populous country in the world and is Southeast Asia's largest economy. Jakarta alone is home to 11.35 million people, more than New York City and Chicago combined. With a rising GDP and population, Indonesia looks to places like Nebraska to provide quality products and protein, with the country being one of the top 10 export markets for Nebraska at \$139 million. Maintaining current relationships and discussing new partnerships left Eugene Goering very encouraged about future market potential.

“As a Nebraska soybean grower, I found that Indonesia imports whole soybeans and meal and their growing economy will want more of our soybeans and other animal protein to improve the diets of their growing population,” said Goering. “It was a very successful trade mission to benefit their country and our state.”

The delegation learned first-hand how Nebraska soybeans play a large part in strengthening Indonesia's food security along with the preservation of its cultural heritage through tempeh and tofu production. Tempeh, a traditional Indonesian food and tofu both require consistent, quality beans with good color, making soybeans from Nebraska a specialty crop. The group also held discussions with different customers centered around Nebraska's increase in crush capacity, allowing for competitive pricing in the soybean meal space.

Other groups engaged by the delegation were distributors, importers, feed millers, influencers, government officials, culinary chefs, consumers and Indonesia's premier agricultural university. The Nebraska Soybean Board extends gratitude to the Nebraska Department of Ag for organizing the trade mission, highlighting collaboration and the importance of promoting all ag exports.



Eugene Goering, representing the Nebraska Soybean Board, met with Indonesian buyers, learned about tempeh and other soy foods made from U.S. soybeans, and discussed Nebraska's high-quality soybean meal with livestock feed buyers. The group also visited Sinta Prima Feedmill in West Java as part of a trade mission led by Nebraska Lt. Gov. Joe Kelly.

Soy Connex 2024 Positions Nebraska Farmers to Increase U.S. Soy Exports

By Erin Worrell, Communications Manager, U.S. Soybean Export Council

Nebraska’s 2024 soybean crop is projected at nearly 310 million bushels, contributing to an expected U.S. Soy crop of 4.6 billion bushels, according to the USDA’s August report. Soy supply is projected to rise by 11% from last year.

In anticipation of this strong crop, the U.S. Soybean Export Council (USSEC) hosted Soy Connex 2024, a global summit held in San Francisco from August 19-21, partially sponsored by the Nebraska Soybean Board (NSB). The event brought together over 400 international soy customers from 62 countries, with 40% attending for the first time. Many customers also participated in trade tours, visiting U.S. soy farms and supply chain partners.

“USSEC does an incredible job connecting the world to U.S. Soy,” says Anne Meis, a Nebraska farmer and vice chair of NSB, who attended Soy Connex 2024.

The summit featured sessions that promoted U.S. Soy’s quality and sustainability, distinguishing it from other vegetable oil products. Current prices make U.S. Soy even more attractive, offering operational efficiencies for livestock farms, feed mills and oil crushers. U.S. Soy’s lower carbon footprint, driven by sustainable farming practices, is another key advantage over soy from other regions.

One session highlighted the benefits of U.S. Soy in animal and aqua feeds, showing

that U.S. Soy adds \$51 per metric ton in nutrient value to fish feed in Indonesia and \$76 per metric ton to shrimp feed in Ecuador. Additionally, data from the Global Feed LCA Institute shows a 20% reduction in the carbon footprint when U.S. soybeans are used in feed.

USSEC has developed the U.S. Soy Sustainability Assurance Protocol (SSAP), which certifies around 70% of U.S. Soy exports. As of mid-August, customers can request carbon footprint data on their SSAP certificates, further supporting sustainable sourcing. Over 1,000 products globally now feature the Sustainable U.S. Soy label, recognized as a symbol of responsible sourcing.

“It was great to see so many companies recognized for using the Sustainable U.S. Soy label,” Meis notes.

Soy Connex also fostered valuable networking, giving international

customers the chance to meet farmers, visit farms and experience the reliability of U.S. Soy firsthand. “I’ve traveled to some of these markets and now saw familiar faces at the summit,” Meis adds.

Following the conclusion of Soy Connex 2024, Anne Meis participated in a global Soy Excellence Center (SEC) meeting, where members discussed the progress and impact of SEC programs. As Secretary of the SEC Global Advisory Panel, Meis plays a vital role in shaping the vision of SECs, which provide workforce training and capacity-building programs for the protein value chain in emerging markets, with a focus on increasing productivity in areas like poultry production, aquaculture and soybean processing. These programs not only support industry growth but also foster economic development, food security and access to affordable protein.



Anne Meis engaged with leaders at Soy Connex 2024 and presented at the Soy Excellence Center (SEC) Global Advisory Meeting.

“USSEC does an incredible job connecting the world to U.S. Soy.”

— ANNE MEIS, NSB VICE CHAIR, NEBRASKA FARMER





There is a relentless spirit that unites us all in agriculture - a conviction we can dream big and that together, we become unstoppable.

As iron sharpens iron,
so one person sharpens another.
Proverbs 27:17 NIV

